

CINEGY MULTIVIEWER

8K

advanced monitoring and analysis
SDI, NDI, IP, SRT & more

CINEGY MULTIVIEWER



Cinegy Multiviewer

The future-proof monitoring and analysis solution that is equally happy in the world of SDI as in purely IP-based environments. Better yet, it can do both and help bridge those worlds. Cinegy Multiviewer enables completely new workflows for remote monitoring and deep analysis that were previously impossible using just one product. The big data analysis telemetry feature allows to track and visualize signal quality, loudness, other types of errors, and to put all this data into correlation to see what is really going on. Streams from satellites, camera feeds, playout devices and other local or remote sources all need to be monitored. Cinegy Multiviewer displays these signals, analyzes them and raises alerts for any detected problems based on pre-defined rules. Multiviewer is running on commodity IT equipment, video streams can be received over Ethernet in case of NDI, IP streams (e.g. MPEG TS) or using any of the supported SDI or SMPTE IP PCIe cards.

Easy-to-use and Customize

Cinegy Multiviewer is easily adapted to changing requirements with a fully customizable interface that may be designed using a WYSIWYG multi-layout designer. Depending on the graphics cards used Cinegy Multiviewer can drive multiple UHD or 8K monitors, providing enough real-estate and video resolution for even the most demanding control room. For those times when the control room is not near the equipment, or the viewer is not in the control room, Cinegy Multiviewer supports full IP and web retransmission of the output screen in up to 8K resolution, making it viewable anywhere in the building, or in the world, with remote control via a web interface.

SRT Support

Cinegy Multiviewer has integrated SRT (Secure, Reliable Transport) for both incoming or outgoing IP signals providing error-free, very low-latency connections over imperfect networks like the Internet. The SRT protocol supports pull as well as push mode allowing it to act as a streaming server.

Cost Savings

Cinegy Multiviewer can receive a single program or multiplexed feeds (MPTS) from standard satellite or cable receivers relaying transponders via RTP/UDP onto the network, dramatically reducing the number of IRDs required for monitoring return feeds. Cinegy Multiviewer also supports SDI and NDI for low-latency signal monitoring supporting mixed SDI, NDI and IP environments.

Channel Monitors

Cinegy Multiviewer displays channel name, audio level indicators, as well as real-time video previews, playing the incoming video at full frame rate. Integrated alarm indicators display signal presence of audio, video and VANC components (CC, AFD, V-Chip), while VU meters dynamically show all present audio channels (stereo, 5.1, etc.) as well as calculated LKFS loudness / AC-3 dialnorm values. If any signal component is outside defined parameters, a corresponding alarm indicator lights up, log entries are generated and a predefined alert is sent via email, SNMP, HTTP, API and JSON data is pushed to the Cinegy Telemetry engine.

Massive Scalability & Cloud Ready

Cinegy Multiviewer is ideal for local and remote operations. It can be scaled from just a few to hundreds of channels while remaining fully supported in cloud based or hosted environments. Offloading decoding of H.264 and HEVC signals to up to four Nvidia GPU cards per server allows for extreme scalability. Cinegy Multiviewer is also available as integrated part of our broadcast cloud solutions e.g. on AWS and Azure.

2019 **PRODUCT**
of the **YEAR**
NABSHOW
Where Content Comes to Life



CINEGY MULTIVIEWER

8K

Integrated Telemetry and Deep Analysis

Cinegy Multiviewer is the data generator that feeds the accompanying Cinegy Telemetry system that allows the “deep dive” analysis and graphic visualization of live and historic data.

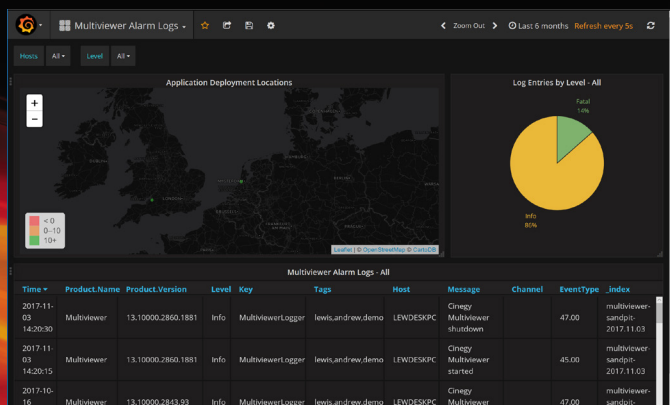
The Cinegy Telemetry system is a free cloud-based service available to all Cinegy Multiviewer customers. It is built on the basis of the freely available Google Elasticsearch database and Grafana for visualization. These components can also be on-site locally for customers that run their servers without Internet access or with security concerns.

What can Cinegy Telemetry do for you?

- Transport stream analysis with multi-channel time-line display
- In-depth error log analysis
- Historic loudness analysis and display
- Monitor and analyze IT and network equipment
- and much more ...



Transport Stream Analysis



Error Log Analysis

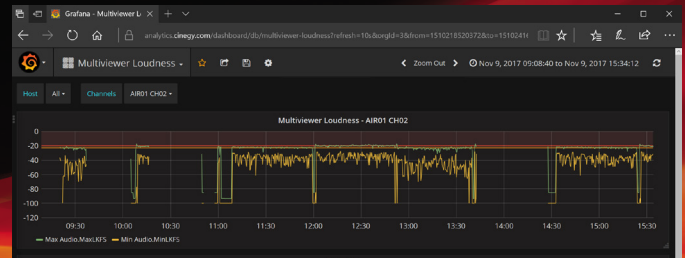
Features Overview

- Monitor and analyze SD / HD / UHD / 8K streams
- Cinegy Telemetry for deep analysis and visualization
- SDI, NDI, IP sources including RTP, UDP, TS etc.
- MPEG-2 and H.264 support in 4:2:0 and 4:2:2
- MPEG-audio, AAC and AC-3
- Integrated SRT support for IP streams
- VANC indicators, V-Chip, AFD Display
- Subtitles: 608/708 CC, DVB bitmap & DVB Teletext
- Alarms: Frozen, silence, excessive black, audio clipping, loss of signal, loudness, CC, etc.
- Advanced layout editor for switchable layouts
- Web based monitoring and remote control
- Simple REST API for building custom controls
- Output to multiple screens up to 8K
- Screen output also to IP and web
- Multi-GPU acceleration of H.264 & HEVC
- Scaled res output for low bit rate streaming

Video I/O

Cinegy Multiviewer supports these SDI & IP boards:

- AJA Kona and Corvid SDI & IP cards
- Blackmagic Design Decklink SDI cards
- Deltacast SDI & IP cards
- NDI via standard Ethernet
- SRT transport encapsulation
- MPEG TS, Daniel2, RTP and UDP via Ethernet
- various others ...



Historic Loudness Analysis



Cinegy LLC

1101 Pennsylvania Ave, 3rd floor
Washington DC 20004, USA
phone: +1 202-621-2350

Cinegy GmbH

Müllerstr. 27
80469 Munich, Germany
phone: +49 89-23885360

sales@cinegy.com
www.cinegy.com

